

PROPERTY SUMMARY REPORT

Murphy Park



PROPERTY DETAILS

Site / Building Name:

Murphy Park

City / County: Maricopa / Pinal**Zip Code:** 85138**Street Address:**

W. Peters and Nall Road & Murphy Road

Min Size / Max Size: 1 Acre / 20 Acres**Zoning:** Industrial

AVAILABILITY

For Sale / Lease: Sale**Sale Price / Terms:** Call Property Contact

DESCRIPTION / SITE DETAILS

Located north of Maricopa-Casa Grande Highway on Murphy Road between W. Steen Road and W. Peters and Nall Road, north of Union Pacific Railroad and west of Ak-Chin Regional Airport. All utilities are available to the site. Contiguous Acres Available for Development: 160-320; Total Size: 481 Acres.

Pinal County Parcel # 50206010B, 50208001

Last Updated: 06.06.2024

Economic Development Contact

City of Maricopa

Office of Economic Opportunity

Christian Price

520.494.2360

Christian.Price@MaricopaOEO.com

Property Contact

EMMERSON HOLDINGS, LLC

Chase Emmerson

480.368.5205

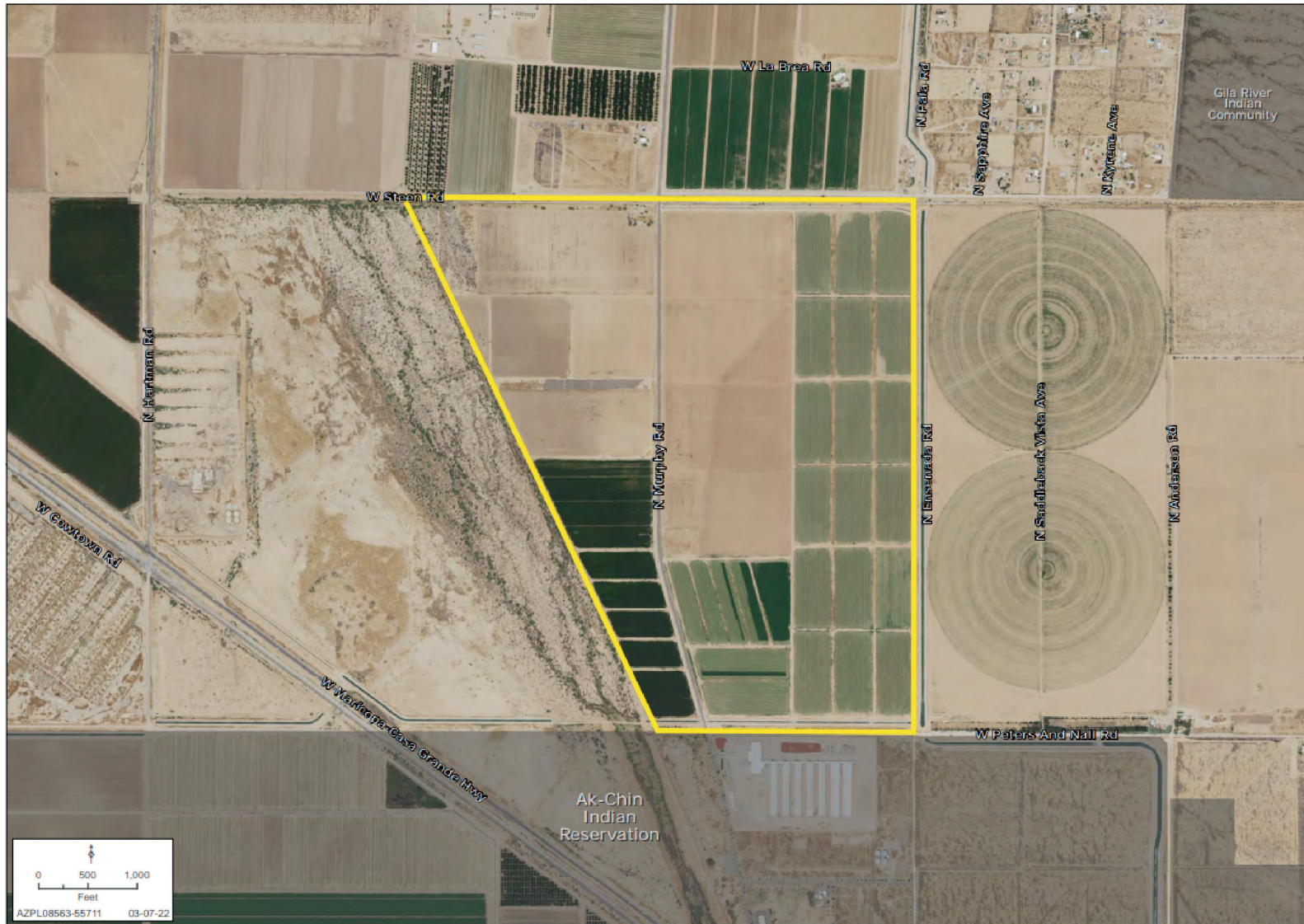
chase@finalplat.com

www.emmersonholdings.com

CITY OF
MARICOPA
PROUD HISTORY • PROSPEROUS FUTURE
www.maricopaoeo.com

PROPERTY SUMMARY REPORT

Murphy Park



Economic Development Contact
City of Maricopa
Office of Economic Opportunity
Christian Price
520.494.2360
Christian.Price@MaricopaOEO.com

Property Contact
EMMERSON HOLDINGS, LLC
Chase Emmerson
480.368.5205
chase@finalplat.com
www.emmersonholdings.com

CITY OF
MARICOPA
PROUD HISTORY • PROSPEROUS FUTURE
www.maricopaoeo.com